

240.60mm

Boat transom

Step 1: Drill the hole

Preference dimension card (with holes size) help to install the outboard in appropriate position on the transom.

Step 2: Detach the motor top cover

Before lifting, tidy up the cables and secure them to the motor. Deatch the four M4 screws from the outboard motor cover.

Step 3: Lifting the machine

Screw in the lifting ring until tight. Use a lifting rope to secure the machine and attach it to the hoist. Slowly adjust the hoist during a trial lift. If the machine remains stable without tilting or swinging, you may proceed with the proper lift.

Lifting objects hazard: pay attention to safety when hoisting equipment or objects nearby to avoid being hurt or crushed by falling objects.

Note: Please install the outboard motor correctly and securely, as improper installation of the outboard motor may result in unforeseen damage to the outboard motor, equipment, and personal injury.

Step 4: Fix the outboard motor

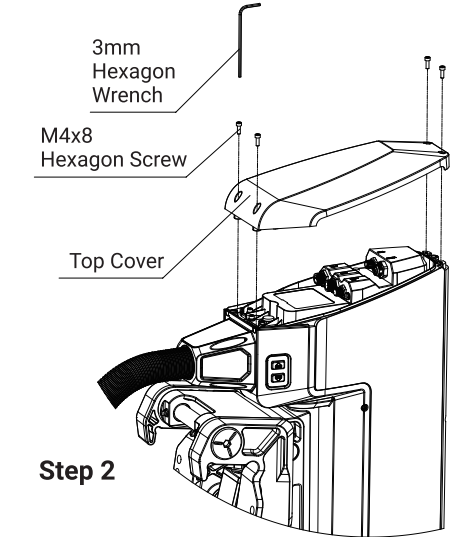
Slowly move the outboard to the installation position; Adjust the alignment of the holes, insert the bolts, washers, nuts and double nuts as shown in the picture below, and tighten them securely;

Apply the silicone sealant (ThreeBond 1216 or equivalent) to the outboard motor installation holes.

Standard Torque: 40N·m(4.08kg·m 29.5lbf·ft)

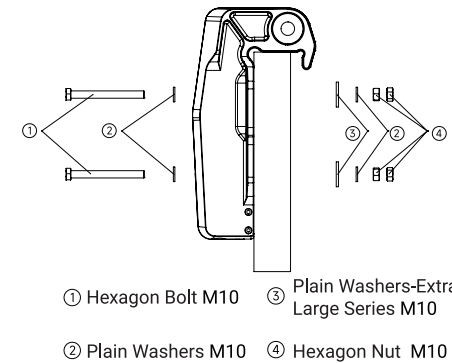
Step 5: Install the top cover

Remove the two lifting rings,put the cover back to original position and tighten it with four M4 screws.



Step 2

Step 4



① Hexagon Bolt M10 ② Plain Washers M10 ③ Plain Washers-Extra Large Series M10 ④ Hexagon Nut M10

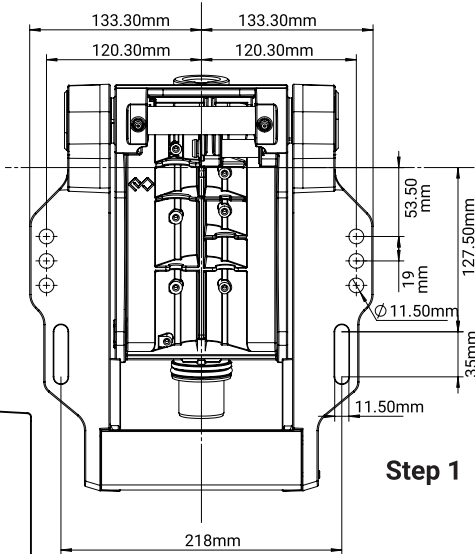
127.50mm

35mm

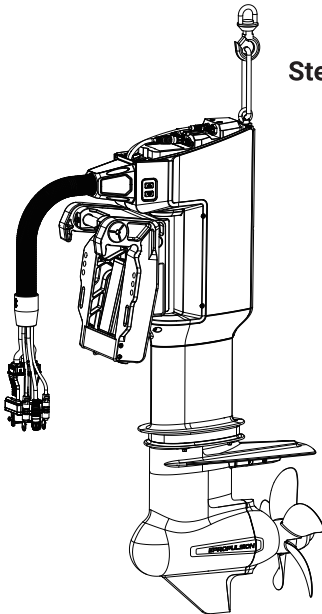
53.50mm

19mm

Ø 11.50mm



Step 1



Step 3