

Smart Gateway RS-485 to N2K Product Specification Sheet

Introduction

The Smart Gateway RS-485 to N2K(hereinafter referred to as the Smart Gateway) is used to monitor the status information of the N-series propulsion systems, including but not limited to motor gear, motor voltage, motor speed, battery temperature, State of Charge (SOC), and Speed Over Ground (SOG), and to send the status information to external devices via the NMEA 2000 network.

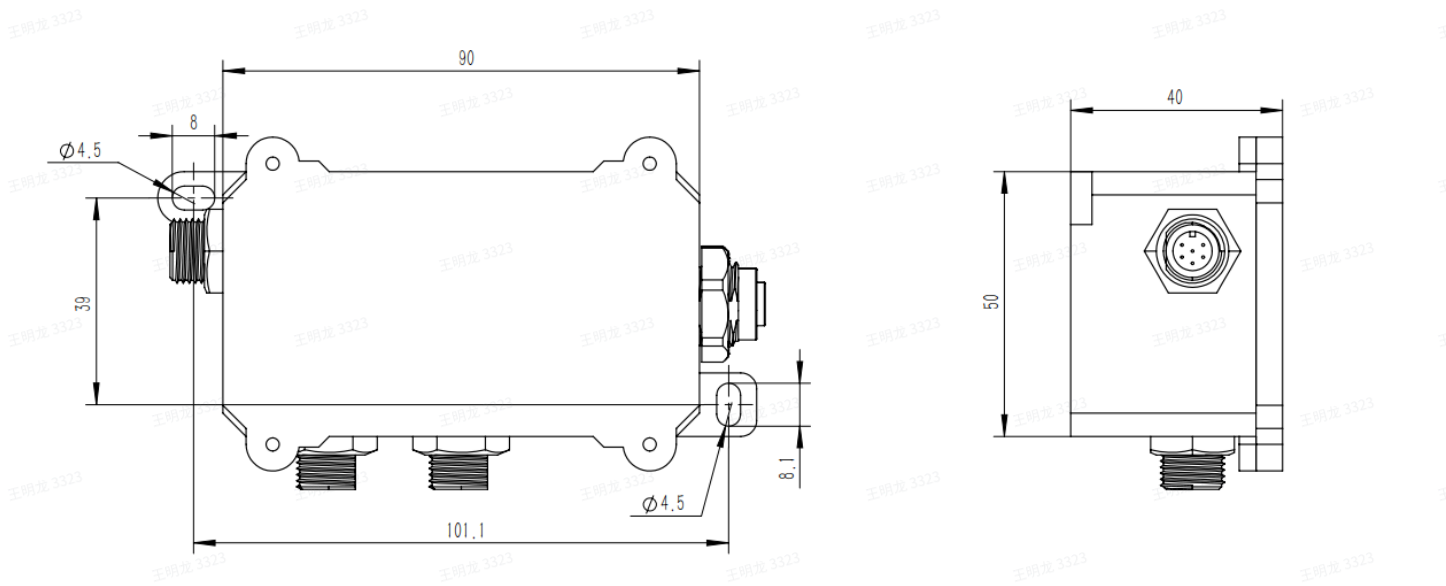
The Smart Gateway features 3 RS485 interfaces and 1 CAN interface, connecting to the propulsion system's 485 network through the RS485 interfaces and to the NMEA 2000 network through the CAN interface.



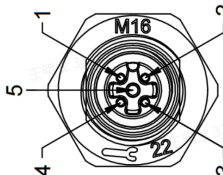
Smart Gateway RS-485 to N2K

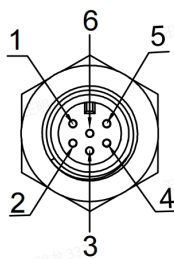
Dimension

Unit:mm



Specification

CAN Interface	Standard	NMEA 2000										
	Interface quantity	1 x CAN port										
	CAN signal	<div></div> <table><tr><td>1</td><td>Shield</td></tr><tr><td>2</td><td>+12V</td></tr><tr><td>3</td><td>GND</td></tr><tr><td>4</td><td>CAN_H</td></tr><tr><td>5</td><td>CAN_L</td></tr></table>	1	Shield	2	+12V	3	GND	4	CAN_H	5	CAN_L
	1	Shield										
	2	+12V										
	3	GND										
	4	CAN_H										
	5	CAN_L										
	Duplex mode	2-wire Half Duplex Mode										
Baud rate	250kbps											
Load capacity	support concurrent transmitting of 110 nodes											
Transmission distance	40m~10km											
Terminating resistor	optional external 120Ω terminating resistor											
Interface protection	IEC 61000-4-2 (ESD) ±30kV (air), ±30kV (contact)											
RS485 interfaces	Standard	EIA RS-485										
	Interface quantity	3 x RS-485 port										
	RS-485 signal	485_A, 485_B, GND										

			<table><tr><td>1</td><td>+5V</td></tr><tr><td>2</td><td>485_A</td></tr><tr><td>3</td><td>NC</td></tr><tr><td>4</td><td>485_B</td></tr><tr><td>5</td><td>GND</td></tr><tr><td>6</td><td>NC</td></tr></table>	1	+5V	2	485_A	3	NC	4	485_B	5	GND	6	NC
	1	+5V													
2	485_A														
3	NC														
4	485_B														
5	GND														
6	NC														
	Baud rate	38400bps													
Power Requirement	Supply Voltage Range	8~30VDC													
Power Consumption	Full-load	0.4W@12V													
Environmental Limit	Operating temperature	-25~+55℃													
	Storage temperature	-25~+70℃													
Physical Characteristic	Waterproof Rating	IP67													
	Installation	Wall mounting													
	Dimension (W x H x D)	50 mm x 40 mm x 90 mm													
	Weight	150g													